

IVECO  **-WAY**
DRIVE THE NEW WAY



ACCESSORIES CATALOGUE



IVECO S-WAY DRIVE THE NEW WAY

IVECO S-WAY provides a complete transport solution designed to enhance the **driver's life** on board and enable the owners to operate efficiently, profitably and sustainably.

Set to become a favourite of drivers, and their home away from home, the IVECO S-WAY cab raises the **working** and **living** experience, providing a spacious and well laid out environment rich in comfort features and advanced functionalities.

IVECO S-WAY delivers outstanding **fuel efficiency** and **sustainability**, together with low Total Cost of Ownership, with its advanced technologies and innovative services.

A **100% connected truck**, IVECO S-WAY ushers in a new era of proactive and **predictive** support.

In line with this new way of working and driving, IVECO offers a new generation of **specifically developed accessories**, that customize and maximize your personal experience with **your NEW IVECO S-WAY**.

Depending on your personality, **you can build your unique IVECO S-WAY** by choosing to **enhance its style** with a wide range of **high-quality chromed details**, with the new LED backlight logo.

Active and passive additional safety and security systems help you to better protect your precious vehicle and its load, while **hi-tech accessories really bring the future on board**.

Last but not least, **you can decide the level of comfort** of your Brand New IVECO S-WAY through a comprehensive series of accessories, as for example a pretty new entertainment system, developed to make your life on board as productive and comfortable as possible.

With IVECO S-WAY, drivers and owners will DRIVE THE NEW WAY.

| | |
|-------------------------------------|----|
| DRIVE IN STYLE | 04 |
| DISTINCTIVE VISIBILITY | 10 |
| ALWAYS SAFE & EFFICIENT | 16 |
| A WORLD OF CONNECTIVITY AND HI-TECH | 26 |
| LIVING COMFORT | 28 |

You can also find the full IVECO Accessories range on the online catalogue by following the link: <http://application.cnh-parts-service.eu/iveco.php>

DRIVE IN STYLE

Every single detail has been carefully designed to highlight its predominant character maximizing aerodynamic performances. High-quality materials and accurate testing allow easy mounting operations.



MIRROR COVERS

MATT CHROMED GRID

MATT CHROMED STYLINK KIT

MIRROR COVERS

Lightweight ABS plastic covers protecting the mirrors and enhancing the design. The kit includes 2 pieces (left and right mirror covers).

| PN | DESCRIPTION |
|-----------|------------------------|
| 500051761 | Chromed mirror covers |
| 500049916 | Primered mirror covers |

MATT CHROMED GRID

Material: Chromed Lightweight ABS add-on covers.

The kit contains:

- 5 covers

| PN | DESCRIPTION |
|-----------|-------------------|
| 500051764 | Matt chromed grid |

MATT CHROMED STYLING KIT

Material: Stainless steel.

The kit contains:

- 2 bumper inlay stickers
- 2 underwindow stickers
- 2 sidefairs inlay stickers

| PN | DESCRIPTION |
|-----------|--------------------------|
| 500051763 | Matt chromed styling kit |

TUNING KIT

Material: Stainless steel high gloss polished.

The kit contains:

- 2 door handles
- 5 grid inlays
- 2 mirror inlays

| PN | DESCRIPTION |
|-----------|-------------|
| 500049918 | Tuning kit |



WHEEL HUB COVERS

- Designed to give maximum protection to your wheel hub
- Diameter 22.5" - 10 holes

| PN | DESCRIPTION |
|-----------|-----------------------------------|
| 500051782 | 1 stainless steel front hub cover |
| 500051783 | 1 stainless steel rear hub cover |



WHEEL NUT COVERS

- Designed to give **maximum protection** to your wheel nuts
- Diameter 32" - pack of 10 pieces

| PN | DESCRIPTION |
|-----------|-------------------------------------|
| 500051794 | Chromed steel |
| 93162600 | Steel with embossed IVECO |
| 2994362 | Plastic chromed 32" |
| 500050281 | Plastic chromed |
| 500050997 | Chromed steel with blue sky details |
| 500050252 | Plastic alpine white |
| 500050479 | Plastic white |
| 500050258 | Plastic black |



WHEEL HUB COVER WITH LOGO

Designed to give maximum protection to your wheel hub emphasizing style thanks to IVECO logo, diameter 22.5" - 10 holes. Not compatible with TPMS.

| PN | DESCRIPTION |
|-----------|---|
| 500025725 | 1 front stainless steel wheel hub cover |
| 500025726 | 1 rear steel wheel hub cover |
| 93162440 | 2 front chromed wheel hub covers |
| 93162678 | 2 rear chromed wheel hub covers |

WHEEL TRIMS

The wheel trims bring style and smartness to movement, further reducing fuel consumption. Available in polished stainless steel or plastic chrome, with fixing brackets and central cup with IVECO logo. Supplied in 2-piece kits.

| PN | DESCRIPTION |
|-----------|--|
| 2994354 | Front steel wheel trims - 22.5" (10 holes) |
| 2994355 | Rear steel wheel trims - 22.5" (10 holes) |
| 500025732 | Front plastic wheel cup - 22.5" (10 holes) |
| 500025733 | Rear plastic wheel cup - 22.5" (10 holes) |





DECALS

The stylish decals, guaranteed waterproof and UV-resistant, enhance the character of the vehicle.



EDGE

| PN | DESCRIPTION |
|-----------|--------------------------------------|
| 500049934 | Kit EDGE variant 1 Silver & Titanium |
| 500049935 | Kit EDGE variant 2 Silver & Gold |



RACE

| PN | DESCRIPTION |
|-----------|------------------------------------|
| 500049937 | Kit RACE variant 1 Red & Silver |
| 500049938 | Kit RACE variant 2 Titanium & Gold |



BAND

| PN | DESCRIPTION |
|-----------|----------------------------------|
| 500049936 | Kit BAND variant 1 Silver & Gold |

CHROMED LOGO & TRIMS

Material: Stainless steel.

The kit contains:

- 1 IVECO logo
- 4 Trims

| PN | DESCRIPTION |
|-----------|----------------------|
| 500051780 | Chromed logo & trims |



IVECO SIDE CABIN SIGN

Set of 2 pieces of side cabin sign, silk-screen printing UV-resistant.

| PN | DESCRIPTION |
|-----------|-----------------------|
| 500049919 | IVECO side cabin sign |

DISTINCTIVE VISIBILITY

A set of accessories realized to provide illumination on the roads or in the working area giving personality and guaranting safety. Electronic horns and reflectives tools allow your vehicle to be always recognizable.

BACKLIGHTED FLEET SIGN

BACKLIGHTED FLEET SIGN

The new LED backlighting cover **designed for the shape of the NEW S-WAY roof** enhances fleet identity with the customized logo.

The kit contains:

- LED stripes
- Lightweight ABS cover
- Sticker with IVECO logo
- Stainless steel matt chromed sticker

Opt. 79454: predisposition for the LED bar and the fleet sign retro-lighting with an in cab controller.

| PN | DESCRIPTION |
|-----------|-------------------------|
| 500051765 | Backlighting fleet sign |





ROOFBAR

Specially shaped to emphasise the design of the front of the vehicle and give it a rugged look.

Superior bullbars:

Diameter 60 mm, with support for 4 additional lights.

Opt. 79454: predisposition for the LED lights with an in cab controller.

| PN | DESCRIPTION |
|-----------|--|
| 500051790 | Electropolished stainless steel superior bullbar |
| 500049940 | Stainless steel black superior bullbar |



LED BEACONS

IVECO accessories LED beacons guarantee optimum lighting at all times (ECE R65 R10 - 12/24 V).

| PN | DESCRIPTION |
|-----------|--|
| 500051725 | Orange LED flashing / three screws fixing |
| 500051726 | Orange LED flashing / rod fixing flexible |
| 500051727 | Orange LED flashing / magnetic fixing base / spiral cable with integrated socket |

LED LIGHT

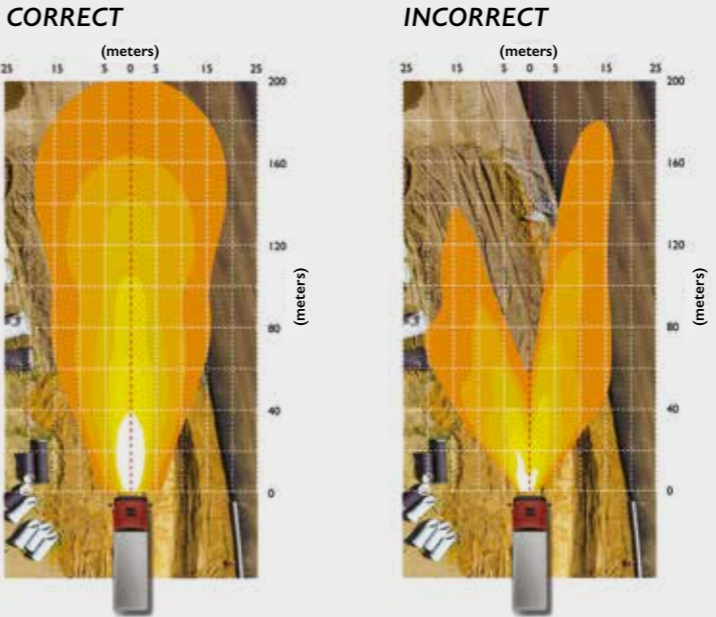
| PN | DESCRIPTION |
|-----------|--|
| 500050661 | Full LED additional light, 700 lm, with 7" diameter, black cover/chromed surround |
| 500050662 | Full LED additional light, 700 lm, with 9" diameter, black cover/chromed surround |
| 500050663 | Full LED additional light, 1200 lm, with 9" diameter, black cover/chromed surround |
| 500050664 | Full LED additional light, 1200 lm, with 9" diameter, chromed cover/chromed surround |
| 500051877 | New Full LED squared additional light, 140 x 67 mm, 2000 lm, black cover |



LED WORKING LAMP

| PN | DESCRIPTION |
|-----------|-----------------------------------|
| 500051560 | LED Working Lamp, 600 lm, 12/24 V |

OFF-ROAD ILLUMINATION



To ensure optimum visibility when working with your headlamps on, your headlamps need to be positioned correctly such as to provide an intense and precise source of luminous power – this is the only way to guarantee your comfort and safety while also taking the stress out of driving.

For the light installation check your local legislation.

LED WORKING LAMPS

The LED has reduced energy consumption, compared to the consumption of halogen lamps is reduced by 50%.

| PN | DESCRIPTION |
|-----------|---|
| 500051722 | LED 10/30 V 1000 lm flood metal 0,5 m. Open end 110 x 110 x 40 mm |
| 500051723 | LED 10/30 V 1800 lm flood plastic 0,5 m. Open 105 x 105 x 27 mm. 12 W |
| 500051724 | LED 10/30 V 2000 lm flood plastic 0,5 m. Open 110 x 94 x 68 mm. 10 W |





COMPRESSED AIR HORN
Complete with built-in solenoid valve 24 V. Length: 19 cm.

| PN | DESCRIPTION |
|-----------|---------------------|
| 500025951 | Compressed air horn |

COMPRESSED AIR HORN WITH 2 TONES
Complete with: spoiler, 24 V solenoid valve and mount gasket. Length 50 cm - 60 cm.

| PN | DESCRIPTION |
|-----------|----------------------------------|
| 500025949 | Compressed air horn with 2 tones |



PNEUMATIC HORN
For use on vehicles without compressed air. Complete with: spoiler and 24 V electropneumatic compressor.

| PN | DESCRIPTION |
|---------|----------------|
| 2993750 | Pneumatic horn |

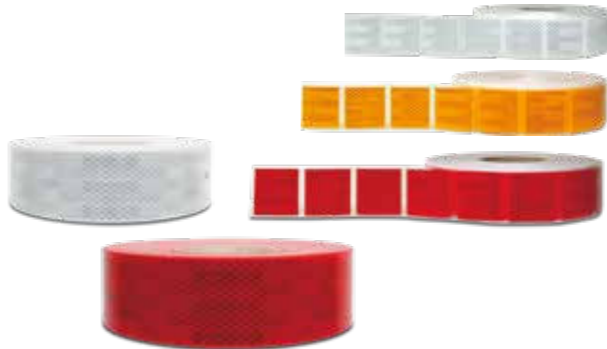


COMPRESSED AIR HORN FOR ARTICULATED TRUCKS
Complete with 24 V solenoid valve and spoilers. Length: 55-60 cm, powerful sound with high and low-tone horns.

| PN | DESCRIPTION |
|-----------|--|
| 500051880 | Compressed air horn for articulated trucks |



RETRO-REFLECTIVE STRIPS



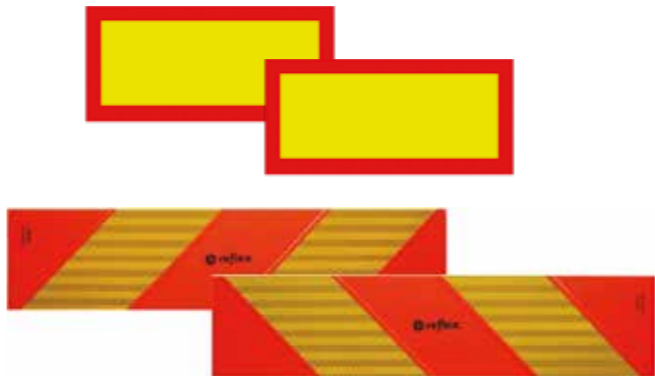
| PN | DESCRIPTION |
|-----------|--------------------------|
| 500025214 | White for rigid surfaces |
| 500025216 | Red for rigid surfaces |
| 500025211 | White for soft surfaces |
| 500025212 | Yellow for soft surfaces |
| 500025213 | Red for soft surfaces |

STRIPES

| PN | DESCRIPTION |
|-----------|--|
| 500050633 | White stripes – transport of third parties goods 120x307 mm – ITALY 24 pcs |
| 500050634 | White stripe – transport of third parties goods 160x307 mm – ITALY 12 pcs |
| 500050630 | Red stripe – transport of in-house goods 120x307 mm – ITALY 24 pcs |
| 500050631 | Red stripe – transport of in-house goods 160x307 mm – ITALY 12 pcs |
| 500050635 | Stripe roll – transport of third parties goods 307 mm x 25 m – ITALY |
| 500050632 | Stripe roll – transport of in-house goods 307 mm x 25 m – ITALY |



PANELS



| PN | DESCRIPTION |
|---------|--|
| 2994173 | Kit of fluorescent panels |
| 2994174 | Kit of fluorescent panels for trailers |

ALWAYS SAFE & EFFICIENT

Increase your vehicle safety helping to prevent accidents with a complete rear camera system. And guarantee high performances thanks to fuel anti-theft tools, monitoring tyre pressure and aerodynamic kit.

REAR CAMERAS



TYRE PRESSURE MONITORING SYSTEMS

FUEL ANTI-THEFT SYSTEMS



REAR VIEW KIT, 5.6" SCREEN

The kit contains:

- Professional waterproof built-in camera IP69K, with a viewing angle of 120°
- TFT LCD 5.6" colour monitor; 4:3 format, with 2 additional camera inputs, 12/24 V, cable 18 m

| PN | DESCRIPTION |
|-----------|----------------------------|
| 500050706 | Rear view kit, 5.6" screen |



REAR VIEW KIT, 7" SCREEN

The kit contains:

- Professional waterproof built-in camera IP69K, with a viewing angle of 120°
- TFT LCD 7" colour monitor; 16:9 format, with 2 additional camera inputs, 12/24 V, cable 18 m

| PN | DESCRIPTION |
|-----------|--------------------------|
| 500050705 | Rear view kit, 7" screen |

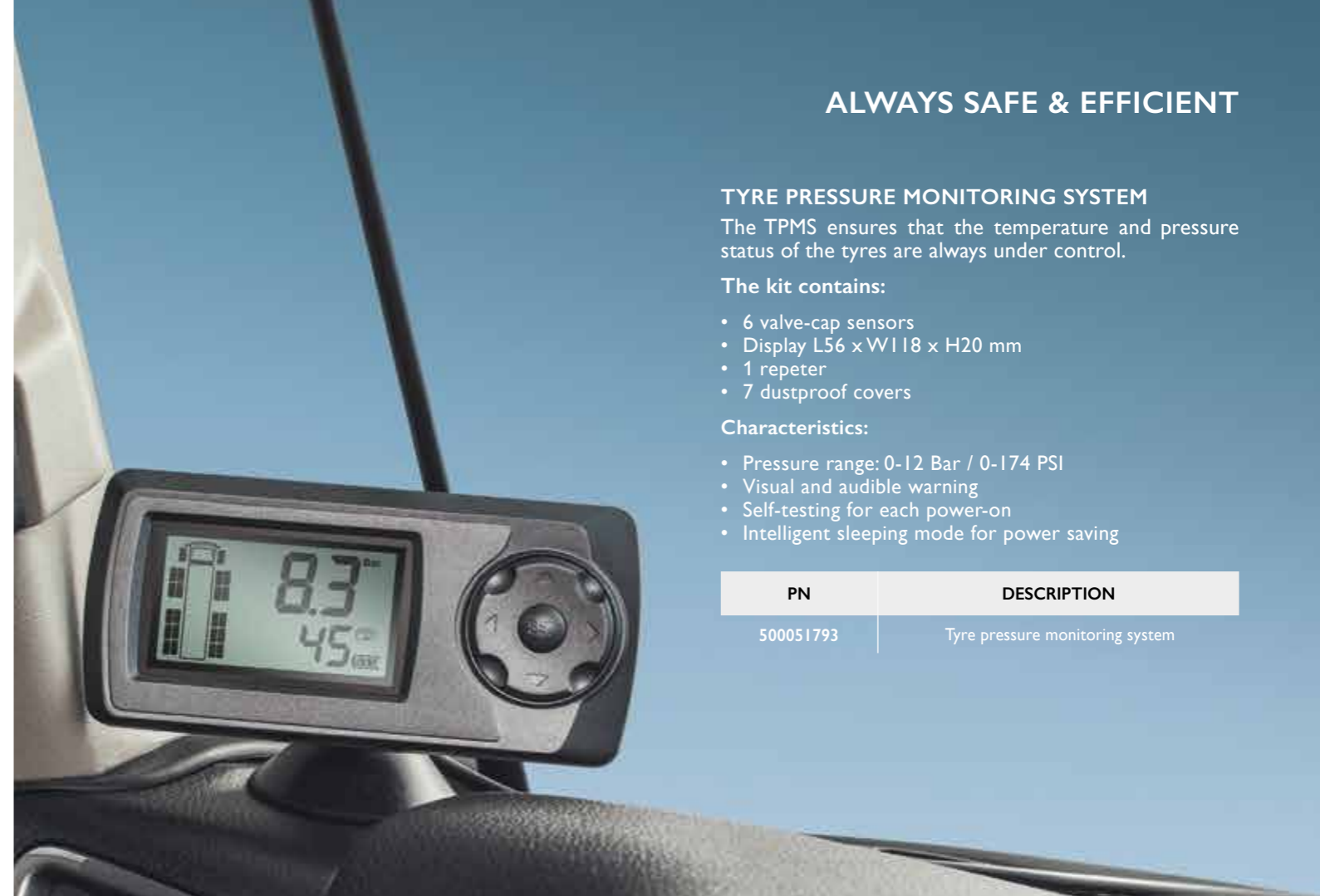


FRONT/REAR VIEW KIT, 5.6" SCREEN

The kit contains:

- Professional waterproof built-in camera IP69K, with a viewing angle of 120°
- TFT LCD 5.6" colour monitor; 4:3 format, with 2 additional camera inputs, 12/24 V
- Colour micro camera with prism lenses to allow frontal viewing with an angle of 30°, cable 18 m

| PN | DESCRIPTION |
|-----------|----------------------------------|
| 500050707 | Front/Rear view kit, 5.6" screen |



ALWAYS SAFE & EFFICIENT

TYRE PRESSURE MONITORING SYSTEM

The TPMS ensures that the temperature and pressure status of the tyres are always under control.

The kit contains:

- 6 valve-cap sensors
- Display L56 x W118 x H20 mm
- 1 repeater
- 7 dustproof covers

Characteristics:

- Pressure range: 0-12 Bar / 0-174 PSI
- Visual and audible warning
- Self-testing for each power-on
- Intelligent sleeping mode for power saving

| PN | DESCRIPTION |
|-----------|---------------------------------|
| 500051793 | Tyre pressure monitoring system |

HEATED REAR CAMERA

The kit contains:

- Professional heated and waterproof camera IP69K, with a viewing angle of 170°. Automatic activation for anti fog and defrosting
- Plug and play connectors, cables

| PN | DESCRIPTION |
|-----------|--------------------|
| 500051896 | Heated rear camera |



EMERGENCY AND FIRST AID KIT

The kit contains:

- Black clutch bag with IVECO screen printing
- Hi-vis vest
- Compact Euro micro triangle
- Dynamo torch
- First aid kit certified DIN13164
- Breaker hummer
- Gloves
- Ice-scraper



| PN | DESCRIPTION |
|-----------|-----------------------------|
| 500049939 | Emergency and first aid kit |

LADDER HOLDER

Made of stainless steel, you can easily load and unload your ladder with the utmost speed and safety.

| PN | DESCRIPTION |
|-----------|---------------|
| 500051895 | Ladder holder |



FUEL SECURITY AND SAFETY DEVICE

The **fuel security devices** are proven to **resolve any haulier fuel security issues**, protecting your fuel.

| PN | DESCRIPTION |
|-----------|---|
| 500050869 | Tank safe impregnable aluminium |
| 500050870 | Tank safe standard aluminium |
| 500050871 | Tank safe standard aluminium for rigid bodies |



CAPS WITH KEYS

For protecting the fuel and urea in the tank.

| PN | DESCRIPTION |
|-----------|--------------------------------------|
| 500050986 | Bayonet fitting fuel cap 2-lug 60 mm |
| 500050987 | Bayonet fitting urea cap 2-lug 60 mm |



TACHOGRAPH

Electronic instrument with functional features, safety and accuracy that allow significant progress in matters of:

- Road safety
- Regulatory compliance
- Improvement of working condition for drivers
- Easy management for transport companies



DLK PRO DOWNLOAD KEY

The DLK Pro Downloadkey S key is the ideal tool for downloading and storing the mass memory data of the 4.0 tachograph and the second generation driver card.

It also works with current driver cards and tachographs up to generation 3.0. The device is equipped with an integrated chip card reader fast downloading of the driver-cards.

Characteristics:

- USB 2.0 interface, Plug (Type A), data download via 6-pin serial interface, SD™ card or SDHC™ card slot, integrated card reader
- TFT color touch-screen display, resolution 320x240 px, 262,000 colors
- 2 GB memory
- Storage temperature: 20 °C
- Operating temperature: -20 +70 °C
- IP 3X security class
- Supply voltage: Connection via USB 2.0 interface: 4.75 - 5.25 V / 100-500 mA, Connection via 6-pin interface: 9 - 30 V / max. 40 mA

| PN | DESCRIPTION |
|-----------|---------------------|
| 500051958 | DLK Pro Downloadkey |

SMARTLINK

DTCO SmartLink is the **fastest and easiest way to communicate with the digital tachograph** using popular and modern smartphones with Android operating system.

It is a Bluetooth® USB key to apply into the interface of the DTCO.

After activating the communication with the smartphone by opening the free App, you can access a number of useful features for the driver:

| PN | DESCRIPTION |
|-----------|-------------|
| 500050979 | SmartLink |



DLK PRO TIS-COMPACT S

DLK Pro TIS-Compact is the complete solution for unloading, archiving and managing tachograph data, particularly suitable for owner-operators and small fleets. It is already suitable to operate both with 4.0 tachigraphers and second generation cards.

Through DLK Pro TIS-Compact, the mass memory data of the digital tachograph and the driver card are downloaded quickly and safely and are transferred to the PC for evaluation, archiving and printing, through the integrated software.

Characteristics:

- USB 2.0 interface, Plug (Type A), data download via 6-pin serial interface, SD™ card or SDHC™ card slot, integrated card reader
- TFT color touch-screen display, resolution 320x240 px, 262,000 colors
- 2 GB memory
- Storage temperature: 20 °C
- Operating temperature: -20 +70 °C
- IP 3X security class
- Supply voltage: Connection via USB 2.0 interface: 4.75 - 5.25 V / 100-500 mA, Connection via 6-pin interface: 9 - 30 V / max. 40 mA

| PN | DESCRIPTION |
|-----------|-----------------------|
| 500051959 | DLK Pro TIS-Compact S |



FIRE EXTINGUISHER

| PN | DESCRIPTION |
|-----------|----------------------------------|
| 93162986 | Fire extinguisher 2 kg - ITALY |
| 500050624 | Fire extinguisher 6 kg - ITALY |
| 2994544 | Fire extinguisher 2 kg - GERMANY |
| 2994545 | Fire extinguisher 6 kg - GERMANY |



BATTERY CHARGER

A powerful 24 V battery charger; capable of delivering 14 A to charge batteries up to 300 Ah, and to maintain counters loads up to 500 Ah.

| PN | DESCRIPTION |
|-----------|-----------------|
| 500025749 | Battery charger |



GPS LOCATOR

The GPS locator Mario is a **next-generation satellite protection system**. It allows you to locate the vehicle through an App, **displaying the position directly from the phone or computer screen**.

Characteristics:

- Internet location: allows to check the routes taken, ability to report the kilometers traveled, fuel consumed, the speed limits exceeded and to control the stopping and driving times
- SAT Alarm: in case of theft, a message will be sent with the geographical location

| PN | DESCRIPTION |
|-----------|-------------|
| 500051469 | GPS Locator |



ANTI-THEFT NUTS

Material: Alkaline zinc plated.

The kit contains:

- 4 nuts and a tightening key.

| PN | DESCRIPTION |
|-----------|------------------------------|
| 500025710 | Anti-theft nuts M22 x 1.5 mm |



TOOL BOXES

Made of **polished, matte** or **flower-embossed** stainless steel, the boxes have plastic Europlex latches. They fit perfectly in the most diverse types of vehicles thanks to the **wide choice of customisations**.

| PN | DESCRIPTION |
|-----------|--|
| 500050577 | Thermoplastic case 400 x 350 x 400 mm |
| 500050578 | Thermoplastic case 500 x 350 x 400 mm |
| 500050579 | Thermoplastic case 600 x 450 x 470 mm |
| 500050580 | Thermoplastic case 700 x 450 x 470 mm |
| 500050581 | Thermoplastic case 800 x 450 x 470 mm |
| 500050582 | Thermoplastic case 1000 x 500 x 470 mm |
| 500050583 | Thermoplastic case 1000 x 500 x 650 mm |



| PN | DESCRIPTION |
|-----------|---|
| 500050200 | Matte stainless steel box 500 x 350 x 400 mm 1.2 mm thick |
| 500050201 | Matte stainless steel box 600 x 400 x 470 mm 1.2 mm thick |
| 500050202 | Matte stainless steel box 500 x 350 x 400 mm 1.5 mm thick |



| PN | DESCRIPTION |
|-----------|--|
| 500050204 | Oval flower-embossed stainless steel hand washing can - 285 x 245 x 400 mm 1 mm thick - 25 L |

| PN | DESCRIPTION |
|-----------|---|
| 500050205 | Oval flower-embossed stainless steel hand washing can - 170 x 370 x 400 mm - 25 L |

| PN | DESCRIPTION |
|-----------|--|
| 500050206 | Flower-embossed stainless box can - 10 L |

| PN | DESCRIPTION |
|-----------|--|
| 500050211 | Polished stainless box 800 x 500 x 500 mm |
| 500050212 | Polished stainless box 1000 x 500 x 500 mm |
| 500050215 | Brackets for all INOX boxes range |



| PN | DESCRIPTION |
|-----------|---|
| 500050213 | Flower-embossed stainless box 800 x 500 x 500 mm |
| 500050214 | Flower-embossed stainless box 1000 x 500 x 500 mm |

| PN | DESCRIPTION |
|-----------|---------------------------------|
| 500050208 | Transpallet stainless steel box |



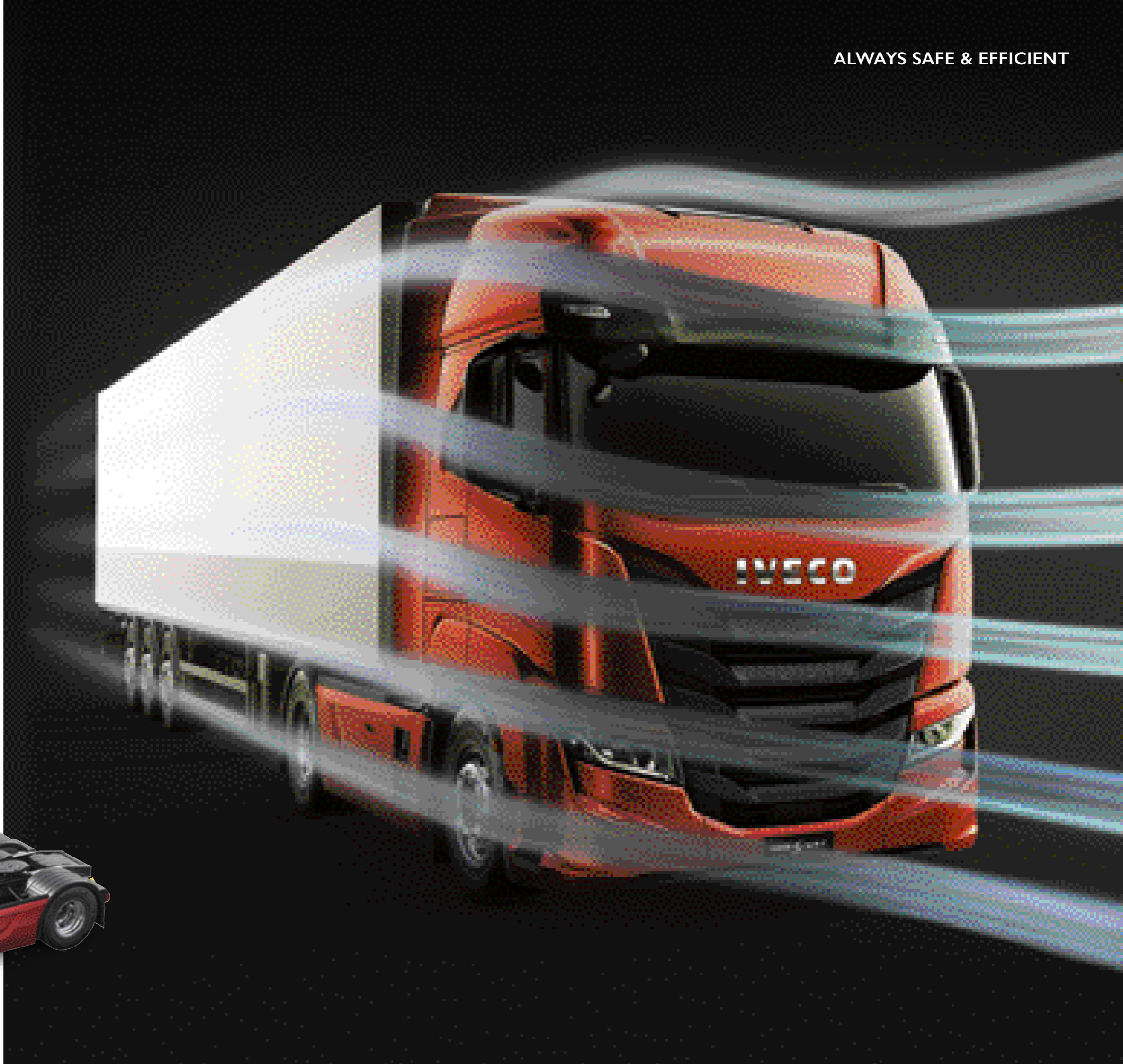


DOOR WINDOWS DEFLECTORS

| PN | DESCRIPTION |
|-----------|---|
| 500051767 | Deflectors - set of 2 pieces (for right and left windows) |

AERODYNAMIC KIT HIGH ROOF

| PN | DESCRIPTION |
|------------|--------------------------|
| 5802485544 | Adjustable roof spoiler |
| 5802485511 | Lower right side spoiler |
| 5802485491 | Lower left side spoiler |
| 5802485477 | Upper left side spoiler |
| 5802485466 | Upper right side spoiler |
| 500051897 | Mounting kit |



A WORLD OF TECHNOLOGY AND CONNECTIVITY

Connectivity on the new IVECO S-WAY has been designed to help the driver operate effortlessly and efficiently, and to support the fleet manager by optimising the vehicle's uptime, fuel efficiency and Total Cost of Ownership.



ANDROID DAB + / GPS / BLUETOOTH MULTIMEDIA SYSTEM

Full Europa truck cartography "TomTomMap" including customized cover; fixing kit; plug & play power supply wiring for IVECO S-Way; cabling for PAB antenna diversity DAB + OEM

| PN | DESCRIPTION |
|-----------|-------------------|
| 500051961 | Multimedia system |



SMARTPHONE SUPPORT

Tailor-made dashboard bracket with USB socket to recharge your smartphone, tablet or TomTom which can be easily and safely positioned in the dedicated holder.

Opt. 72945: Connectivity Box + cradle predisposition (Mobile/Tablet/Driver Linc)

| PN | DESCRIPTION |
|-----------|---|
| 500051786 | Smartphone cradle, tablet holder, TomTom (drivelinc) holder with USB socket integrated in the bracket |
| 500051899 | Qi Cradle for Smartphone to recharge inductively your device |



HI-VISION 2.0

Matchig the new audio & video system guarantees innovation, technology and ease of use, creating the ideal environment for relaxation time.

| PN | DESCRIPTION |
|-----------|---|
| 500051888 | Monitor 24", USB and HDMI socket, antenna, plug and play cables and mounting kit. |



HI-SOUND 24 V 2.0

| PN | DESCRIPTION |
|-----------|--|
| 500051878 | 1 subwoofer; plug and play cables, amplifier; fixing bracket |



PORTABLE NAVIGATOR 7" TRUCK EU

- 7" high-resolution touch screen
- Dimensions: 188 x 114 x 12 mm
- TomTom™ Europe truck maps for 43 countries, including Russia, with free upgrade truck map
- Bluetooth® handsfree with simultaneous navigation and calls
- Automatic audio/video input for rear view camera
- Audio output
- Integrated eco-traffic light system
- Dedicated truck software: by setting dimensions such as the weight of the vehicle and the type of material to be transported, it will calculate the best route possible, taking into consideration the width of roads, height of tunnels and bridge weight limits for heavy vehicles

| PN | DESCRIPTION |
|-----------|--------------------------------|
| 500049944 | Portable Navigator 7" TRUCK EU |

IVECO DAB "PLUS" RADIO

- Removable face plate with LCD display
- Front SD card and USB port
- Bluetooth®
- CD/MP3/WMA player
- 4 Channels x 40 W MAX
- iPod connection

| PN | DESCRIPTION |
|-----------|------------------------|
| 500051960 | IVECO DAB "PLUS" radio |



LIVING COMFORT

MICROWAVE

USB LED READING LIGHT

PREMIUM SEAT COVERS

MATS

COFFEE MACHINE





MICROWAVE OVEN

Microwave oven with intuitive and robust design integrated ceramic plate easy to clean interior LED light. Check OPT predisposition on vehicle configurator.

| PN | DESCRIPTION |
|-----------|------------------------|
| 500051789 | Microwave oven |
| 500049931 | Microwave mounting kit |



USB LED READING LIGHT

| PN | DESCRIPTION |
|-----------|--|
| 500051762 | LED courtesy reading light with USB socket |



AIR BLOWER

Air blower kit for cab interior with an innovative and ergonomic design.

| PN | DESCRIPTION |
|-----------|-------------|
| 500036271 | Air blower |

COFFEE MACHINE

| PN | DESCRIPTION |
|-----------|--|
| 500049941 | New generation truck machine for coffee pads 140 W, 24 V |



RUBBISH CAN

Ergonomic rubbish can with branded metallic support to be hang to the fridge handle.

| PN | DESCRIPTION |
|-----------|-------------|
| 500051898 | Rubbish can |

SLEEPING SET

| PN | DESCRIPTION |
|-----------|---------------------------------------|
| 500049930 | Ergonomic topper in light memory foam |
| 500049929 | Cover topper |
| 500051510 | Pillow |



LIVING COMFORT

SEAT COVERS

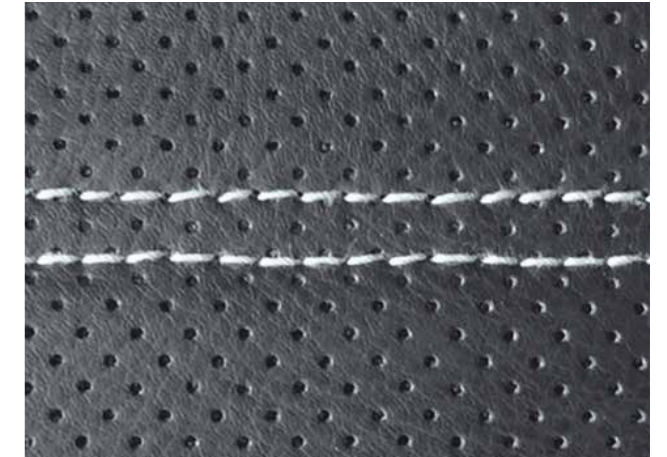
The lines of seat covers are designed to meet all needs and have a working environment tailored to your personal needs.



SKY-HIGH LINE

Black faux leather with micro-perforated banded backrest and customized with IVECO embroidered logo.

| PN | DESCRIPTION |
|-----------|--------------------------|
| 500049926 | Driver's seat standard |
| 500049927 | Driver's Hi-comfort seat |
| 500049928 | Passenger seat |



ACTIVE LINE

Black Tecnosilk fabric, electrowelded centre panel with diamond pattern insert, top seat faux leather with IVECO embroidered logo.

| PN | DESCRIPTION |
|-----------|--------------------------|
| 500049920 | Driver's seat standard |
| 500049921 | Driver's Hi-comfort seat |
| 500049922 | Passenger seat |

EVERLASTING LINE

Tech. Black fabric, side plush anthracite faux leather, backrest in jersey, top seat in grey jersey customized with IVECO embroidered logo.

| PN | DESCRIPTION |
|-----------|--------------------------|
| 500049923 | Driver's seat standard |
| 500049924 | Driver's Hi-comfort seat |
| 500049925 | Passenger seat |





LIVING COMFORT

FABRIC MATS

Developed to match the new flooring, they are customized with a woven IVECO logo. Double-fixing system guarantees they stay in place to avoid potentially hazardous situations.



SKY-HIGH LINE

In velour Twist tufted dark grey fabric, anthracite-colour nubuck edging and lead color stitching. Silver IVECO logo and red steering wheel logo stitched and gel backing.

| PN | DESCRIPTION |
|-----------|--------------------------------------|
| 500049914 | Front floor mat kit |
| 500049915 | Mat zone night for automatic gearbox |

ACTIVE LINE

In velour Magnum tufted dark grey fabric, anthracite-colour nubuck edging and lead color stitching Black IVECO logo and red steering wheel logo stitched and granular backing.

| PN | DESCRIPTION |
|-----------|--------------------------------------|
| 500049912 | Front floor mat kit |
| 500049913 | Mat zone night for automatic gearbox |

EVERLASTING LINE

ACTIVE LINE

SKY-HIGH LINE

EVERLASTING LINE

In Endurance grey fabric, black fabric edging, red steering wheel logo stitched and granular backing.

| PN | DESCRIPTION |
|-----------|---------------------|
| 500049911 | Front floor mat kit |

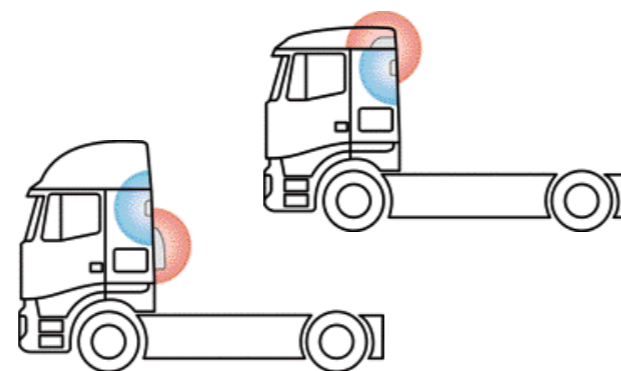


EXTERNAL PARKING COOLER

The stationary vehicle air conditioning achieves the maximum thermal comfort. It works silently and cleanly with the engine off, lowering the temperature and reducing humidity in the way that only true air conditioners can, leaving the roof hatch free.

| PN | DESCRIPTION |
|-----------|-------------|
| 500025706 | Fresco Top |
| 500025707 | Fresco Back |

Fresco Top: installable above cab. Not compatible with S-Way AS fitted with aerodynamic kit.



TRUCK CARE KIT

Cosmetic detergents for cleaning your vehicle. Professional line, technological formulation.

The kit contains:

- Shining Body 250 ml to clean windows, dashboard, steering wheel
- Perfect Interior 250 ml to seat cover fabric and mats
- Clean Air Perfume 250 ml to sanitize air
- Back to Black Tyre spray 250 ml
- Black nitrile gloves
- Microfiber cloth
- 2 white cotton grips

| PN | DESCRIPTION |
|-----------|----------------|
| 500049933 | Truck care kit |



RUBBER MATS SET

For protecting the cab interior. Acid resistant, washable and resistant to changing shape. With a raised edge to prevent dirt spillage.

| PN | DESCRIPTION |
|-----------|-----------------|
| 500049917 | Rubber mats set |



IVECO | Accessories



IVECO

Your partner for sustainable transport